



Knowsley Council

Knowsley Local Plan: Core Strategy

Sub-National Population Projections Update

JUNE 2014 VERSION

1. Introduction

- 1.1 On 29 May 2014, the Office for National Statistics (ONS) published the **2012-based Sub-National Population Projections**. These projections set out, on a local authority basis, the projected changes in the size and age structure of the population over a 25 year period. The 2012-based projections replace the 2011-based interim projections, and the previous 2010-based projections, which were the latest previous set of long term projections.
- 1.2 The sub-national population projections are constrained by the assumptions made for the 2012-based national population projections. They assume a continuation of recent local trends in fertility, mortality and migration. They do not account for the impact of national or local policies which may be applied in the future, or for economic or social changes which might have influence over population change. They also do not account for the capacity of an area to accommodate a change in population. The projections become increasingly uncertain the further they are carried forward, and particularly so for smaller geographic areas and at single years of age.
- 1.3 The ONS publish a full and detailed methodology for the sub-national population projections, which is available from the ONS website¹.
- 1.4 This report sets out a brief overview of the 2012-based sub-national population projections and the implications of this data for Knowsley, focussing in particular on any potential impacts on the preparation of the Knowsley Local Plan.

2. The Projections and the Knowsley Local Plan

- 2.1 The sub-national population projections are used as a common framework for informing local-level policy and planning in a number of different fields, including health, education and planning. The sub-national population projection data has been a key evidence base in the preparation of the Knowsley Local Plan to date, and has been referred to in a range of evidence base documents.
- 2.2 Changes in the projected population are identified through consideration of natural change attributable to birth and death rates, but also of in- and out-migration levels. A change in the size and structure of the local population is one of the key drivers behind needs and demands for new homes, services and supporting infrastructure. Information about the anticipated changes in the age structure of the population, including for example the proportion of people who are of working age, or who are within older age groups, is also important in terms of identifying demand for jobs and services and for facilities to accommodate the needs of an ageing population.

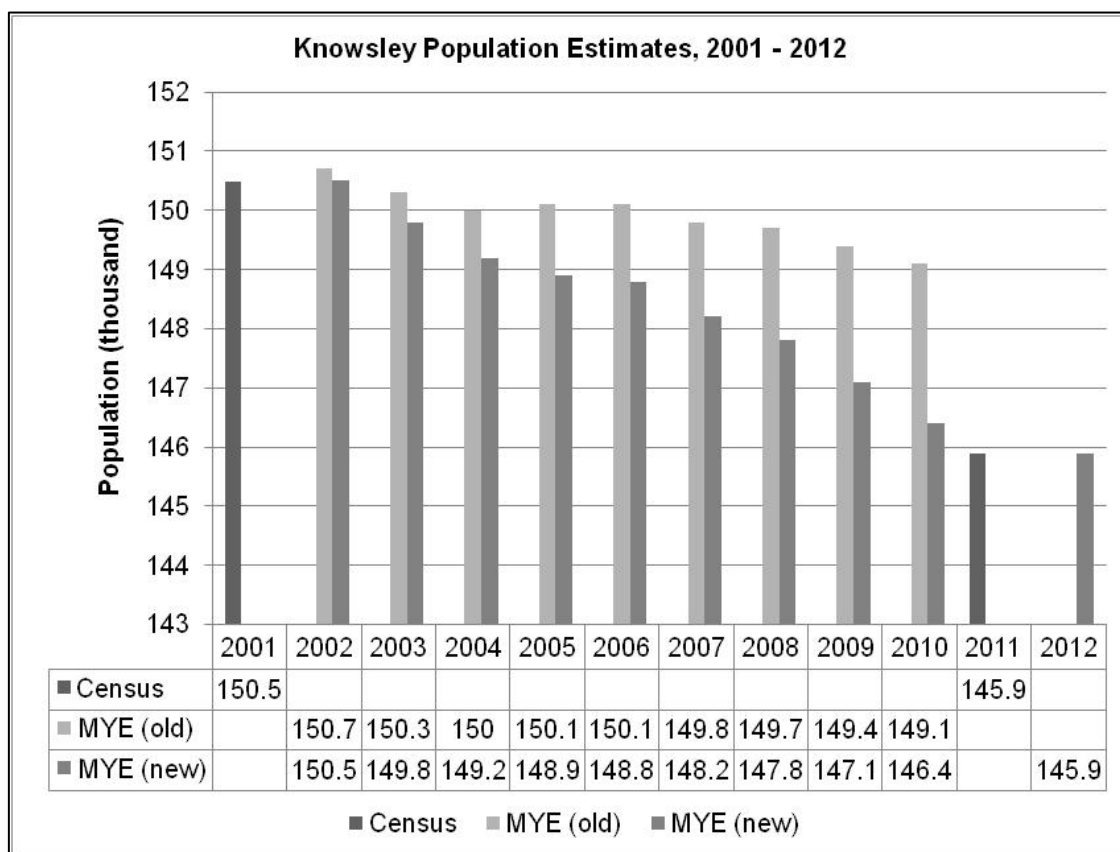
¹ See <http://www.ons.gov.uk/ons/rel/snpp/sub-national-population-projections/2012-based-projections/index.html>

2.3 Population projections also inform other national datasets and statistics, including the Communities and Local Government (CLG)-produced **Sub-National Household Projections**. This is also an important dataset for the evidence base for the Knowsley Local Plan, as this projects the number of households likely to be resident in the Borough, using both the population projections, and projections relating to household sizes and formation rates. This has been extensively referred to in the Council’s Local Plan evidence base.

3. Existing Population in Knowsley

3.1 The ONS publishes annual estimates of population within each of England’s local authority areas. In April 2013, ONS published data which retrospectively revised the previously published historic mid-year estimate data set, based on the more accurate data collected within the 2011 census. This provided a more realistic dataset which documented the changing population levels in Knowsley between 2001 and 2011. Figure 1 sets out this information, including comparison of the older set of mid-year population estimates with those recently published. The retrospective revisions to the older projections (which were based on pre 2011 Census data) clearly identify the impact of the steady decline of population in Knowsley between 2001 and 2011.

Figure 1: Mid-year Population Estimates for Knowsley, 2001 – 2012



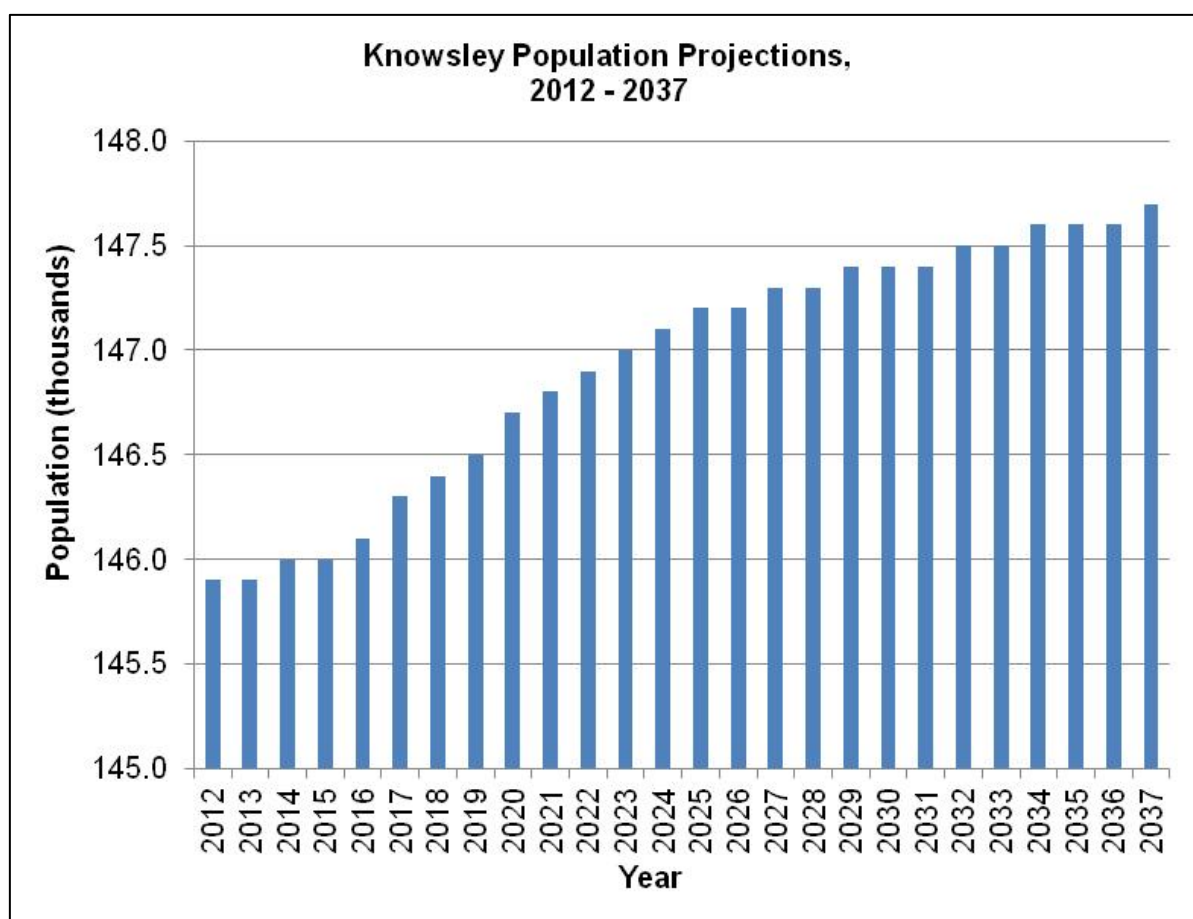
Source: ONS Mid-year Population Estimates, Census 2001 and 2011, and 2012 (ONS, 2013)

3.2 In 2013, the ONS published a mid-year estimate for the year 2012, which places Knowsley's population at 145,936, just 36 persons higher than the previous Census year. This is shown in rounded form in Figure 1.

4. Population Projections in Knowsley

4.1 The 2012-based sub-national population projections set out the projected overall population for Knowsley between 2012 and 2037, as shown in Figure 2. This starts from the mid-year estimate of the population in 2012 as 145,900. The dataset shows that Knowsley's population is expected to rise by approximately 1,800 persons over a 25 year period reaching 147,700 by 2037. This represents a percentage increase of 1.23% over 25 years. The population is projected to grow at an annual average rate of approximately 72 additional persons per annum.

Figure 2: Sub-national Population Projections for Knowsley, 2012-2037



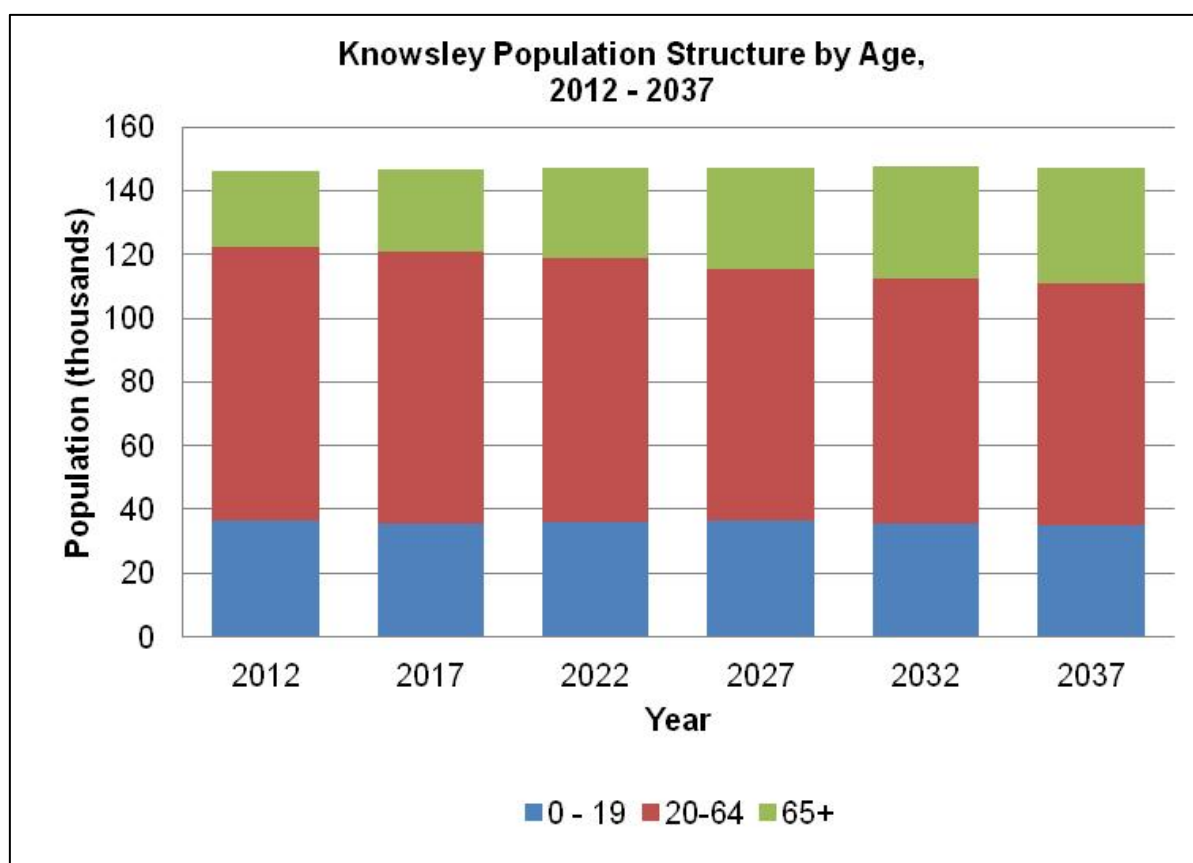
Source: 2012-based Interim Sub-national Population Projections (ONS, 2014)

4.2 In addition to the overall population growth projections, the 2012-based ONS dataset also provides a breakdown of the anticipated population structure change over the 25 year period between 2012 and 2037. This is because looking only at overall population levels can mask underlying trends in different age groups, for example an ageing population (and hence a higher

proportion of older and elderly people). For housing growth, this can also help to provide important information about changes to the household-forming aged population (i.e. those aged around 20 – 45).

- 4.3 Figure 3 shows the changing projected structure of the working age population of Knowsley at five year intervals between 2012 and 2037. For the purposes of this exercise, working age has been approximated as the groups aged 20-64, although it is noted that the state pension age is expected to change over the period to 2037, and there will be many economically active people over the age of 65. This shows that the proportion of working age people has reduced, whilst the older population has grown significantly. This is estimated as a decreased working age population of around 9,700 persons, while the over 65 population is projected to swell dramatically by 12,500 persons over the 25 year period.

Figure 3: Knowsley Population Structure by Age, 2012-2037

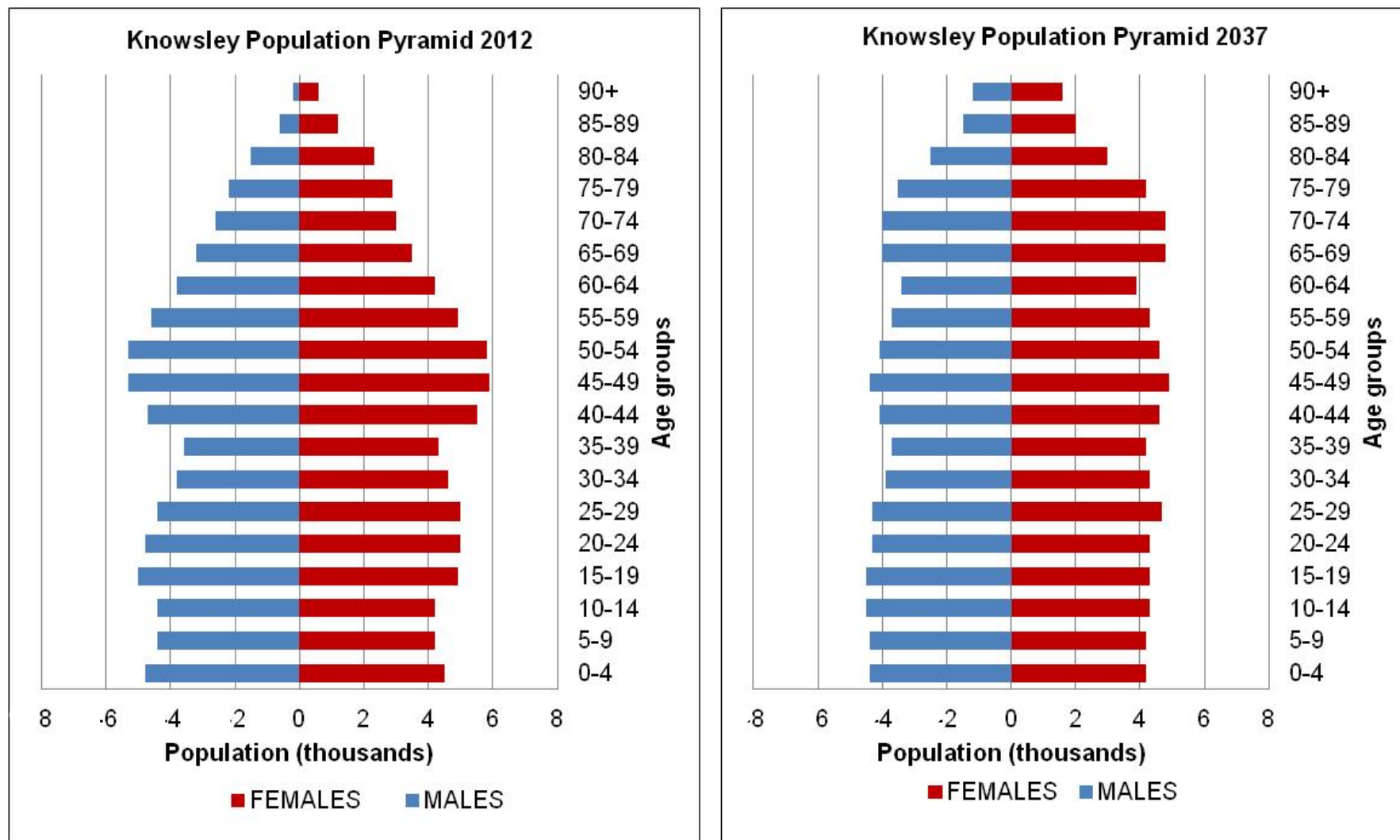


Source: Source: 2012-based Interim Sub-national Population Projections (ONS, 2014)

- 4.4 This information is displayed in more detail in the Knowsley population pyramids within Figure 4, which clearly demonstrate the changing age structure of the Knowsley population, including the difference between males and females, between the structure in 2012 and the projected structure in 2037. This shows a progressively ageing population, as the uppermost part of the pyramid swells in size between the two dates. In addition, the pyramids

show a small decline in the population aged under 30, alongside a more notable decline in the population aged 40-54, corresponding with this group being aged 65 and over by 2037.

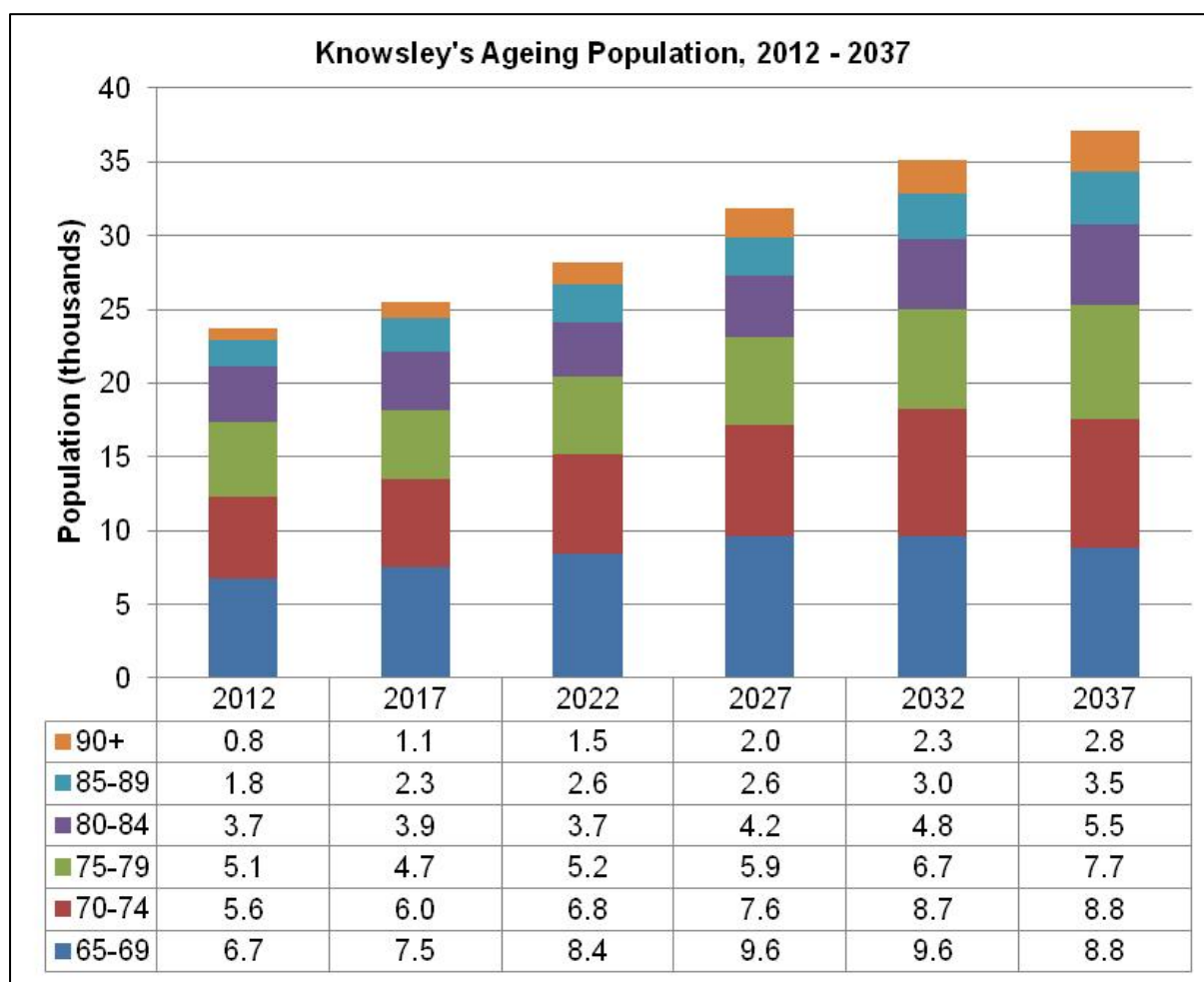
Figure 4: Knowsley Population Pyramids in 2012 and 2037



Source: 2012-based Interim Sub-national Population Projections (ONS, 2014)

4.5 The projected ageing population in Knowsley between 2012 and 2037 is shown in more detail in Figure 5. This again demonstrates that there is projected to be a significant increase in the population aged 65+ over the period 2037. Significantly, this includes an increase of nearly 2,000 residents aged over 90 years old, representing a very significant increase in people of this age over the projection period. This increase is in line with an overall trend of an ageing population demonstrated through national statistics.

Figure 5: Knowsley’s Ageing Population, 2012-2037



Source: 2012-based Interim Sub-national Population Projections (ONS, 2014)

4.6 The overall gross projected population change and change in percentage terms to the different five-year age groups in Knowsley is shown in Table 1. This clearly highlights which five-year age groups are projected to be subject to the most significant gains and losses between 2012 and 2017. As noted in Figures 3-5, the most significant gains are projected to be in the groups aged over 65, whilst the most significant losses are for the younger age bands, including the groups within the working age population.

Table 1: Projected Population change by five year age bands, 2012-2037

| Age Group | Population 2012 | Population 2037 | Gross change | % Increase on 2012 population |
|-----------|-----------------|-----------------|--------------|-------------------------------|
| 0-4 | 9,300 | 8,600 | -700 | -7.53 |
| 5-9 | 8,600 | 8,600 | 0 | 0.00 |
| 10-14 | 8,600 | 8,800 | 200 | 2.33 |
| 15-19 | 9,900 | 8,800 | -1,100 | -11.11 |
| 20-24 | 9,800 | 8,600 | -1,200 | -12.24 |
| 25-29 | 9,400 | 9,000 | -400 | -4.26 |
| 30-34 | 8,400 | 8,200 | -200 | -2.38 |
| 35-39 | 7,900 | 7,900 | 0 | 0.00 |
| 40-44 | 10,200 | 8,700 | -1,500 | -14.71 |
| 45-49 | 11,200 | 9,300 | -1,900 | -16.96 |
| 50-54 | 11,100 | 8,700 | -2,400 | -21.62 |
| 55-59 | 9,500 | 8,000 | -1,500 | -15.79 |
| 60-64 | 8,000 | 7,300 | -700 | -8.75 |
| 65-69 | 6,700 | 8,800 | 2,100 | 31.34 |
| 70-74 | 5,600 | 8,800 | 3,200 | 57.14 |
| 75-79 | 5,100 | 7,700 | 2,600 | 50.98 |
| 80-84 | 3,800 | 5,500 | 1,700 | 44.74 |
| 85-89 | 1,800 | 3,500 | 1,700 | 94.44 |
| 90+ | 800 | 2,800 | 2,000 | 250.00 |

Source: 2012-based Interim Sub-national Population Projections (ONS, 2014)

4.7 The 2012-based projections also provide an insight into the components of population change which drive the statistics. For each year between 2012 and 2037, the dataset provides clues as to the influence of estimated natural change (i.e. births and deaths) and estimated migration (both internal, cross border and international) on overall projections. Table 2 summarises this information for each year cumulatively between 2012 and 2037. This shows that by 2037, an additional 45,000 births will have occurred in Knowsley, with this natural change tempered by 35,900 deaths. In-migration of approximately 130,700 people is overshadowed by the projected out-migration of 137,500 people, leaving a net decrease in population due to migration of around 7,000 persons. Together, natural change and migration contribute to the addition in population of approximately 1,800 persons.

Table 2: Summary Components of Population Change (Cumulative), 2012-2037

| Year | Births | Deaths | Migration in | Migration out | Overall population |
|------|--------|--------|--------------|---------------|--------------------|
| 2012 | n/a | n/a | n/a | n/a | 145,900 |
| 2013 | 1,900 | 1,500 | 5,200 | 5,600 | 145,900 |
| 2014 | 3,800 | 2,900 | 10,400 | 11,200 | 146,000 |
| 2015 | 5,700 | 4,300 | 15,600 | 16,800 | 146,000 |
| 2016 | 7,700 | 5,700 | 20,800 | 22,400 | 146,100 |
| 2017 | 9,700 | 7,100 | 26,000 | 28,000 | 146,300 |
| 2018 | 11,600 | 8,500 | 31,200 | 33,600 | 146,400 |
| 2019 | 13,500 | 9,900 | 36,400 | 39,200 | 146,500 |
| 2020 | 15,400 | 11,800 | 42,100 | 44,900 | 146,700 |
| 2021 | 17,300 | 13,200 | 47,300 | 50,500 | 146,800 |
| 2022 | 19,200 | 14,600 | 52,500 | 56,000 | 146,900 |
| 2023 | 21,100 | 16,000 | 57,700 | 61,500 | 147,000 |
| 2024 | 22,900 | 17,400 | 62,900 | 67,000 | 147,100 |
| 2025 | 24,700 | 18,800 | 68,100 | 72,500 | 147,200 |
| 2026 | 26,500 | 20,200 | 73,300 | 78,000 | 147,200 |
| 2027 | 28,300 | 21,600 | 78,500 | 83,500 | 147,300 |
| 2028 | 30,100 | 23,000 | 83,700 | 88,900 | 147,300 |
| 2029 | 31,800 | 24,400 | 88,900 | 94,300 | 147,400 |
| 2030 | 33,500 | 25,800 | 94,100 | 99,700 | 147,400 |
| 2031 | 35,200 | 27,200 | 99,300 | 105,100 | 147,400 |
| 2032 | 36,900 | 28,600 | 104,500 | 110,500 | 147,500 |
| 2033 | 38,600 | 30,000 | 109,700 | 115,900 | 147,500 |
| 2034 | 40,300 | 31,400 | 114,900 | 121,300 | 147,600 |
| 2035 | 42,000 | 32,900 | 120,100 | 126,700 | 147,600 |
| 2036 | 43,700 | 34,400 | 125,400 | 132,100 | 147,600 |
| 2037 | 45,400 | 35,900 | 130,700 | 137,500 | 147,700 |

Source: 2012-based Interim Sub-national Population Projections (ONS, 2014)

NB Figures are in this table are affected by rounding

- 4.8 The comparison of population projections is helpful in demonstrating the volatile nature of ONS population projections in recent years, and the extent to which they are influenced by historic trends. Figure 6 demonstrates the sheer variety of outcomes for Knowsley when considering the historic population projections.
- 4.9 The projections produced with base dates of 2003 and 2004 projected a negative trend for population change in Knowsley over the long term. This was based on a historic trend of population loss in the Borough during the 1980s and 1990s. The 2006-based projections represented a significant shift from ONS regarding its views on Knowsley's future population, which under this model was projected to increase by approximately 7,500 persons by 2031. The 2008- and 2010-based projections follow a very similar trajectory, projecting a less pronounced increase in population than the 2006-based dataset. The interim 2011-based projections again follow a similar trajectory of a marginal increase in population, albeit with a much lower start point

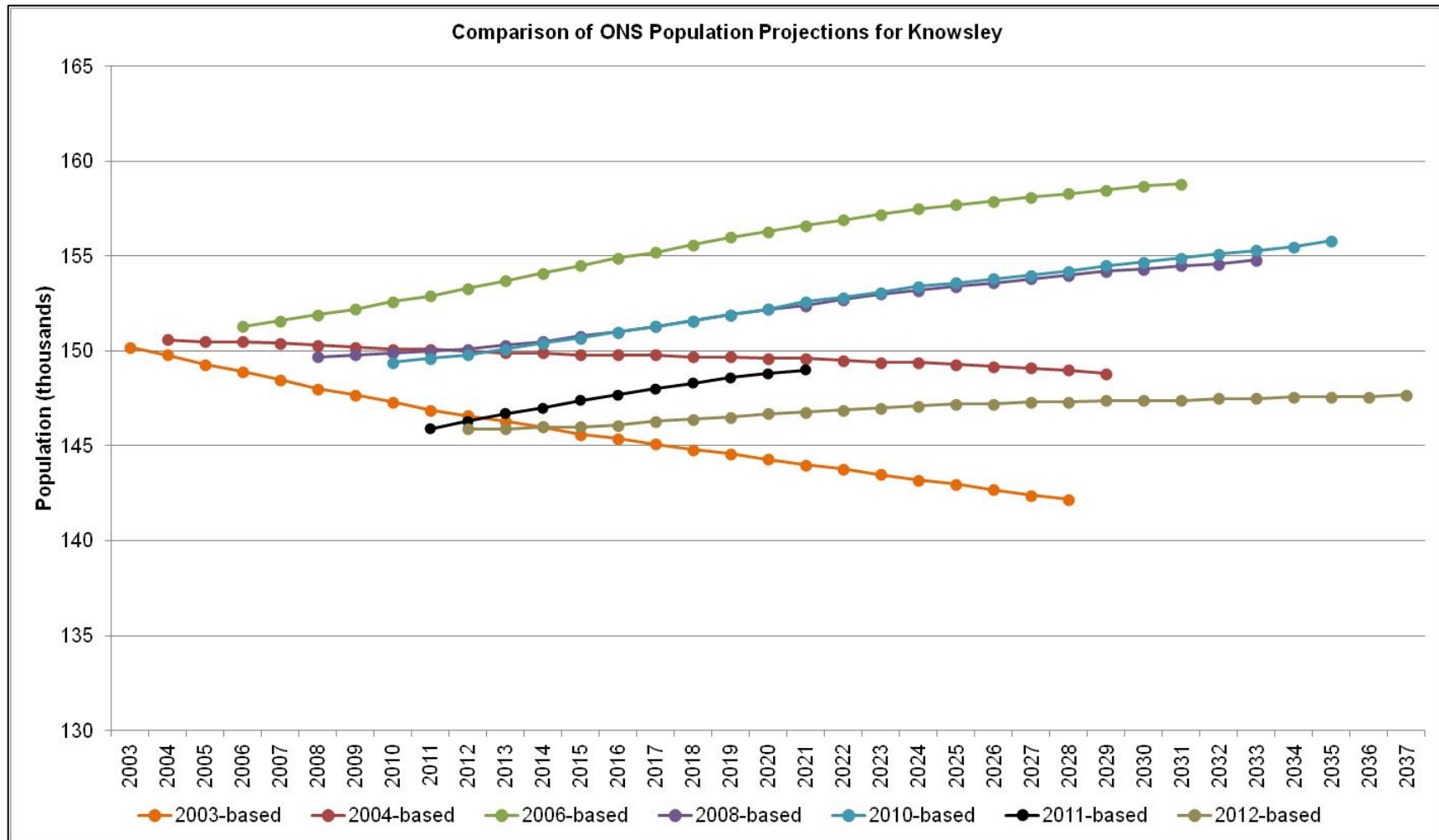
(reflective of the difference between the Census 2011 population estimates, and the earlier mid-year estimates, as discussed in section 3 of this report) and for a shorter trajectory, reflecting their interim status. Finally, 2012-based projections show, as stated previously, an anticipated overall increase of 1,800 persons over the 25 year period. The average annual growth over this period is 72 persons per annum. This is a lower growth rate than those within more recent population projections, which consistently projected an annual average growth of 200-300 persons per annum. Table 3 sets out the average annual growth rates for each of the recent population projections for Knowsley.

Table 3: Average Population Growth Attributable to Population Projections

| Projections | Time period | Total years | Total growth | Average annual growth |
|--------------------|--------------------|--------------------|---------------------|------------------------------|
| 2003-based | 2003-2028 | 25 | -8000 | -320 |
| 2004-based | 2004-2029 | 25 | -1800 | -72 |
| 2006-based | 2006-2031 | 25 | +7500 | +300 |
| 2008-based | 2004-2033 | 25 | +5100 | +204 |
| 2010-based | 2010-2035 | 25 | +6400 | +256 |
| 2011-based | 2011-2021 | 10 | +3100 | +310 |
| 2012-based | 2012-2037 | 25 | +1800 | +72 |

Source: 2012-based, 2011-based, 2010-based, 2008-based, 2006-based, 2004-based and 2003-based Sub-National Population Projections (ONS, Various)

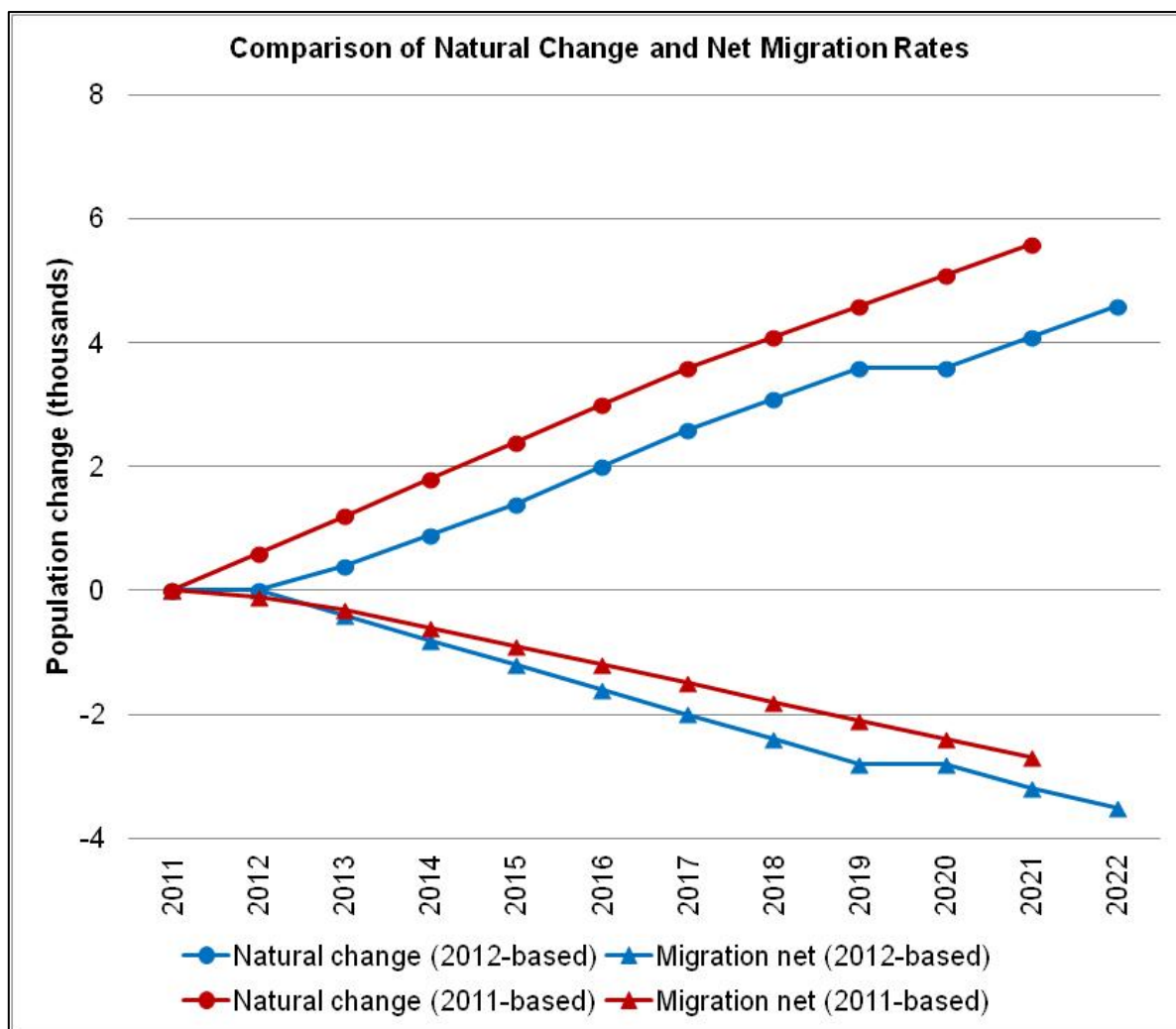
Figure 6: Comparison of ONS Population Projections for Knowsley



Source: 2012-based, 2011-based, 2010-based, 2008-based, 2006-based, 2004-based and 2003-based Sub-National Population Projections (ONS, Various)

4.10 Given that the 2012-based population projections represent a decline in the projected rate of Knowsley's population, it is pertinent to consider how the individual inputs have changed between sets of projections. Figure 7 shows a comparison of the 2012-based projections and the 2011-based projections for the period 2011-2012, in terms of the natural change (the net impact of births and deaths) and net migration (the net impact of in- and out-migration). This shows that the rate of natural change within the 2012-based projections is lower than the 2011-based projections. This means that there is less population growth attributable to this source. This also shows that the rate of net out migration within the 2012-based projections is greater than within the 2011-based projections. This means that there is a greater population decline projected from this source. Overall, this shows some of the evidence behind the projected decline in the rate of population change in Knowsley.

Figure 7: Comparison of Natural Change and Net Migration Rates



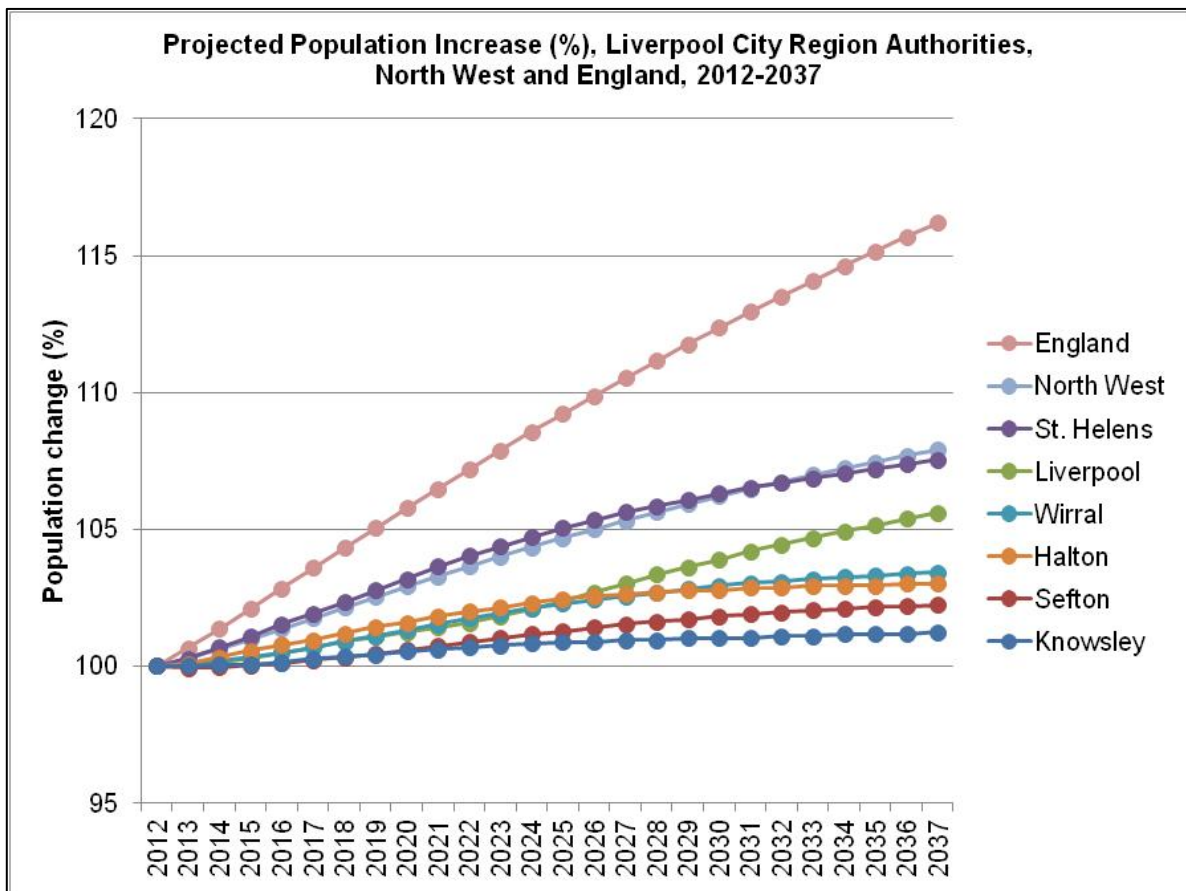
Source: 2012-based and 2011-based Sub-National Population Projections (ONS, Various)

5. Sub-regional Comparisons

5.1 The sub-national population projections are published for each local authority in England. Comparing the changes in population for Knowsley with the surrounding neighbouring authorities within the Liverpool City Region, and also regional and national comparators, is helpful in seeking to understand how Knowsley’s population is expected to change, in comparison to projected trends elsewhere. Figure 8 shows the comparative projected population growth for local authorities, North West region and Wales. This is presented as percentages, with 2012 set as 100%, in order that a direct comparison can be made between areas with different populations.

5.2 This shows that of the areas under comparison, Knowsley’s population is projected to grow the least as a proportion of the existing population. Of the Liverpool City Region authorities, Liverpool and St.Helens are expected to experience the largest proportional growth. However, all Liverpool City Region authorities show a lower percentage increase than the North West region on average, and a significantly lower increase than England as a whole.

Figure 8: Projected Population Increase (%), Liverpool City Region Authorities, North West and England, 2012-2037



Source: 2012-based Sub-National Population Projections (ONS, 2014)

- 5.3 Table 3 shows the projected growth in population between 2012 and 2037, for each of these areas, again set as a percentage increase against the 2012 level. This shows a significant level of growth at the England level (16.21%), compared to growth for each of the Liverpool City Region authorities. Knowsley shows the lowest projected growth rate, at 1.23% over the period.

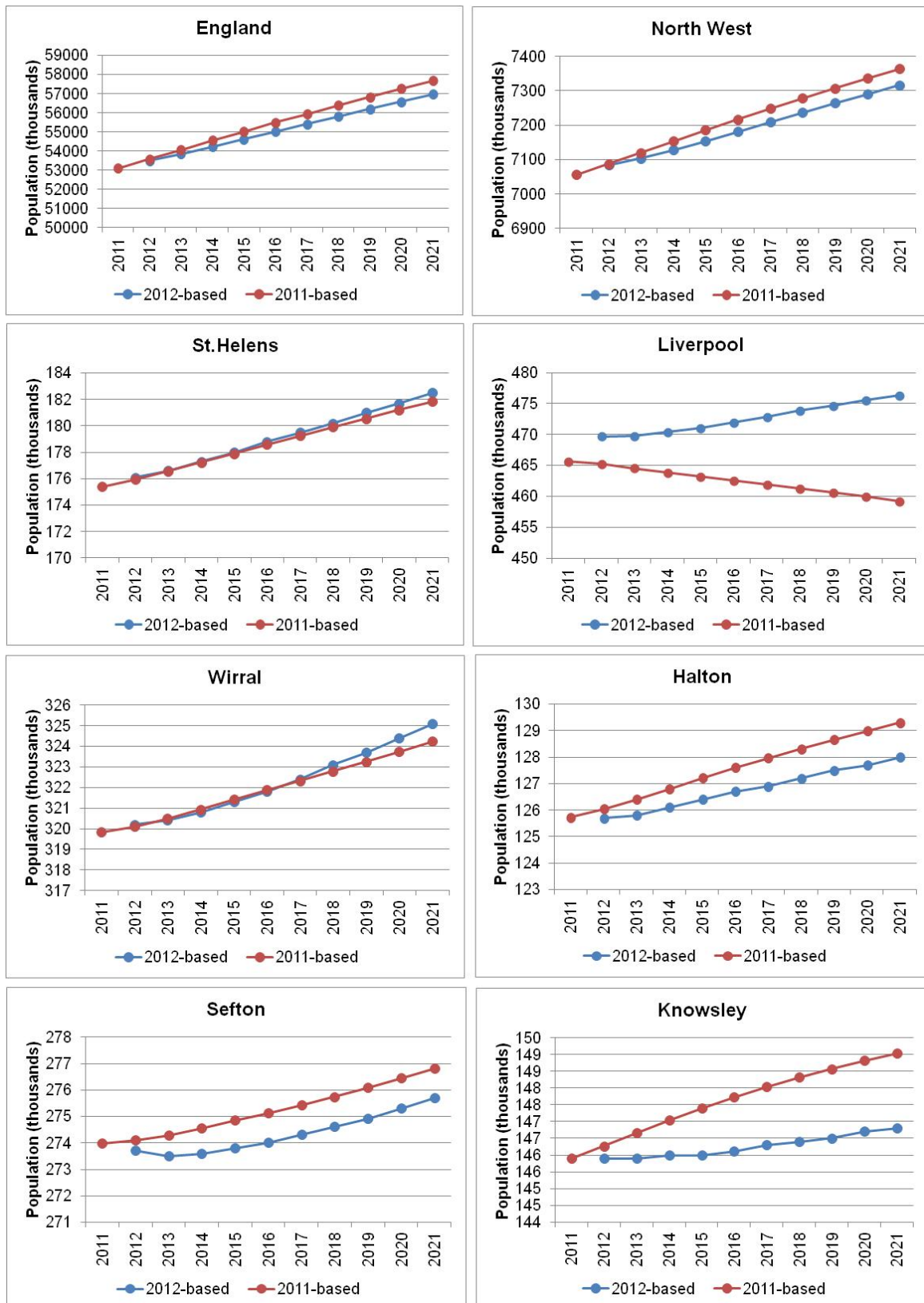
Table 3: Projected Population Increase, Liverpool City Region Authorities, North West and England, 2012-2037

| Area | Population 2012 (thousands) | Population 2037 (thousands) | Total growth 2012-2037 (persons) | % increase 2012-2037 |
|-------------------|-----------------------------|-----------------------------|----------------------------------|----------------------|
| England | 53493.7 | 62166.0 | 8,672,300 | 16.21% |
| North West | 7084.3 | 7645.4 | 561,100 | 7.92% |
| St.Helens | 176.1 | 189.4 | 13,300 | 7.55% |
| Liverpool | 469.7 | 496.0 | 26,300 | 5.60% |
| Wirral | 320.2 | 331.2 | 11,000 | 3.44% |
| Halton | 125.7 | 129.5 | 3,800 | 3.02% |
| Sefton | 273.7 | 279.8 | 6,100 | 2.23% |
| Knowsley | 145.9 | 147.7 | 1,800 | 1.23% |

Source: 2012-based Sub-National Population Projections (ONS, 2014)

- 5.4 From Section 4 of this report, it is possible to determine that the 2012-based sub-national population projections have introduced a significant change to the levels of growth predicted within the 2011-based interim projections. For Knowsley, as demonstrated in Figure 6, the comparison of these projections shows a reduced level of projected growth for Knowsley. Figure 9 shows the comparison between these two datasets for the Liverpool City Region Authorities, as well as North West and England comparison areas, for the period 2011 to 2021 only.
- 5.5 Figure 9 demonstrates that in general, the difference between the two sets of projections experienced in Knowsley (i.e. the 2012-based projections showing a reduced rate of growth compared to the 2011-based projections) is the same as that experienced for England and the North West, as well as several of the other Liverpool City Region authorities. For other authorities, including Liverpool, St.Helens and Wirral, the 2012-based projections project an increased rate of population growth over the 2011-based projections. For Liverpool, the 2012-based projections project a reversal in the trend projected in the 2011-base data, moving from projected population loss to a projected significant population gain.

Figure 9: Comparison of 2011-based and 2012-based Population Projections for England, North West and Liverpool City Region Authorities 2011-2021



Source: 2012-based and 2011-based Sub-National Population Projections (ONS, Various)

6. Summary - Implications for the Knowsley

6.1 The 2012-based sub-national population projections present some key issues for Knowsley. A summary of the findings of the analysis of the projections presented so far in this report is set out as follows:

- Knowsley's total population is expected to rise by 1,800 persons between 2012 and 2037. This is a significantly slower rate of population growth than anticipated in previous population projections.
- Other areas (including neighbouring authorities and regional and national comparators) are projected to experience a significantly greater proportionate increase in their populations.
- Natural change (births and deaths) delivers a net increase in population – but this is tempered by a significant net out-migration. In comparison to previous projections, Knowsley is expected to undergo both a lower rate of population increase due to natural change, and also a higher rate of net out migration.
- The working age population (broadly approximated as 20-64 year olds) is expected to decline over the period by 9,700 persons.
- Knowsley's older population is expected to increase significantly. The over 65 population is expected to grow by 12,500 persons and the over 90 population is expected to grow by 2000 persons.

6.2 When considering the implications of this analysis, it is important to note, as set out in Section 1 of this report, that the sub-national population projections are drawn from past trends, and that they do not account for national or local policies, or economic or social changes. In addition, over the longer term, projections are increasingly uncertain. This means that the projections should not be read as predictions with any certainty. However, several of the outcomes of the analysis of the projections are pertinent to consider in detail, across a range of different areas.

Population

- Overall, the population of Knowsley is expected to increase, albeit at a lesser rate than previously projected. By 2037, the latest projections estimate that the population will not have returned to its pre-2000 levels of over 150,000 persons. This has implications for the established priority to stabilise the population of the Borough, and for the viability of service provision across a range of areas.
- The lowered population projections (in comparison to earlier projections) appear to be due to both birth and death rates, and also migration. The data shows that Knowsley is expected to undergo both a lower rate of natural change than expected, but also a greater rate of net out migration. This presents a range of challenges to the Borough.

Housing

- The fall in the age groups which produce newly forming households (i.e. working age population) will have implications for the provision of new housing, including a potential reduction in the projected rate of housing growth based on past trends;

- The fall in the number of children and young people projected may reflect the trend for smaller families and hence smaller households, which will have implications for the number and type of family housing needed;
- The significant growth in the older sections of the population will have implications for the provision of accommodation in the long term (e.g. longer social rent periods and under-occupation) and will also have implications for the need to provide specialist and supported accommodation options.

Health and Education

- The significant growth in the older sections of the population will have significant implications for health service and social care provision for Knowsley. This may affect the needs for physical infrastructure (such as capacity at hospitals and clinics), service provision (personnel and carer provision) and the requirements for adapted or specialist properties to accommodate those with mobility or other health concerns.
- The reduction in the number of children and young people may have an impact on the viability of education provision in Knowsley, including physical infrastructure (such as schools and colleges), and also on other services making provision for the younger population.

Economic growth

- The projected fall in the working age population has implications for the availability of members of the workforce, for businesses and other organisations across Knowsley and the wider Liverpool City Region.
- A reduction in the proportion of the population which is economically active could have implications for the overall economic performance of the Borough, including the growth of local businesses, as well as the ability of the local population to contribute to expenditure in Knowsley's town and local centres. As noted, migration is a major contributing factor to the lowered projected rate of population growth, including out-migration of economically active people.

6.3 It is considered that for the majority of these areas, the newly published population projections do not present any significant difference to the Council's existing evidence to support the policies in its Local Plan. Many of the trends identified represent a continuation of the findings of previous evidence analysis. However, the identified matters reinforce the requirement for the continuation of a strong policy response in Knowsley, across a range of areas, and to ensure that priorities are clearly identified.

7. Summary – Implications for the Knowsley Local Plan

- 7.1 For the Knowsley Local Plan, the consideration of the 2012-based population projections reinforces several of the policy approaches set out within the emerging Knowsley Local Plan Core Strategy, including:
- To encourage and maintain sustainable employment growth, by accommodating new development and promoting skill development and entrepreneurship. This includes growing Knowsley's workforce;

- A focus on delivery of new homes to meet existing identified needs and demands, to retain existing residents and to attract more residents to the Borough. This includes delivery of affordable housing options and specialist and supported accommodation;
- Delivery of regeneration programmes within the Borough, to improve community sustainability, and improve existing town and local centres;
- To ensure the delivery of adequate supporting infrastructure for the Borough, including transport, health, community and environmental infrastructure.

7.2 In planning for housing growth in Knowsley, the population projections can be considered to be a useful proxy for estimating the level of household growth expected in the Borough based on past trends. Sub-national household projections are produced by CLG, usually following the publication of population projections, using estimates of household formation rates over the period. In general, in Knowsley, the household projections have proportionately exceeded population projections, due to the growth in households being primarily due to the household formation rates, rather than net population growth.

7.3 Table 4 shows the comparison between the rates of growth attributable to population projections and their subsequently produced household projections, for the years currently available. The difference between the datasets in terms of overall percentage increase is significant. From this trend, it is possible to assume that when the 2012-based household projections are published (expected late 2014), projected household growth, as a percentage of existing households, will exceed the projected percentage growth in population. However, it is not possible to state with certainty at this stage what this projection will show, given that the CLG methodology has not yet been published. Whilst the population projections are used as a basis for household projections, it is also not possible at this stage to assume that the reduced level of projected population growth (as shown in the 2012-based projections) will lead to a similarly reduced level of projected household growth. Table 4 shows an example of this, whereby the 2011-based interim projections showed a reduced rate of population growth, the corresponding household projections were very high. Given this, it will remain important for the Council to consider the impacts of the 2012-based sub-national household projections when they are released in late 2014, and in particular to consider any changes this data may bring (alongside other data for example related to unmet needs) to the Council's consideration of its objectively assessed needs for new housing.

Table 4: Comparisons between Growth Attributable to Population and Household Growth, various projections

| Projections | Time period | Total years | Average annual population growth | % Increase on baseline population | Average annual household growth | % Increase on baseline households |
|-------------------|-------------|-------------|----------------------------------|-----------------------------------|---------------------------------|-----------------------------------|
| 2006-based | 2006-2031 | 25 | +300 | 5.0 | 429 | 15.8 |
| 2008-based | 2004-2033 | 25 | +204 | 3.4 | 360 | 14.5 |
| 2010-based | 2010-2035 | 25 | +256 | 4.2 | n/a | n/a |
| 2011-based | 2011-2021 | 10 | +310 | 2.1 | 241 | 17.4 |
| 2012-based | 2012-2037 | 25 | +72 | 1.2 | n/a | n/a |

Source: 2012-based, 2011-based, 2010-based, 2008-based and 2006-based Sub-National Population Projections (ONS, Various); 2006-based, 2008-based and 2011-based Sub National Household Projections (CLG, Various).

NB. 2011-based projections cover a shorter time period of 10 years. Household projections are not available for the 2010-based dataset, and the 2012-based household projections are expected to be released in late 2014.

7.4 As previously stated, for example in paragraph 3.1.5 of the Council's hearing statement 3A (concerning objectively assessed housing needs – Examination library reference CH03A) the Liverpool City Region authorities which fall wholly or partly within the same housing market area as Knowsley intend to commission a future sub-regional Strategic Housing Market Assessment. This is likely to be after the publication of the 2012 based household projections expected in late 2014, and will inform the relevant local authorities of any implications for their objectively assessed housing needs. This Assessment will be used as key evidence on which to base future Local Plan documents in the City Region. In advance of this assessment being undertaken it will be too early to predict any implications that the 2012 based population or household projections may have for the objectively assessed housing needs in Knowsley.

For more information log on to
www.knowsley.gov.uk/LocalPlan

You can also get this information in other formats.
Please phone Customer Services on 0151 443 4031
or email customerservices@knowsley.gov.uk



Knowsley Council

Copyright © 2014 Metropolitan Borough of Knowsley